

This list of records set by the unimaginable and unprecedented *2005 Atlantic Hurricane Season*, began to be compiled in early October of 2005. It was composed so that all could see how inconceivable this hurricane season truly was. If you only glance at Hurricane Wilma's records, they alone will be enough to understand the impact of this astonishing season. Please note that even with the time and effort put into this, along with the help of some wonderful and generous people, there may still be a few errors amongst this very lengthy list. Although, do know that every possible piece of information that could be found was read thoroughly and used efficiently, from when a record was thought of in my head, to researching it, to re-researching it right down in the National Hurricane Center's official archives. All records were checked multiple times through different sources as well. Furthermore, I found every "old record" for each record that was broken and/or if it needed an old record, so if a record seemed strange or ambiguous, one could see the previous holder of that record. Please also recognize that all records can only date back to approximately the 1860's because of the lack of technology, and lack of truthful, factual statistics. For newcomers of the weather world, wikipedia.com is a great source for definitions of the more "common knowledge" terms used in this list, along with the National Hurricane Center. I hope that this report gives all, weather enthusiasts and non-weather enthusiasts alike, the opportunity to understand the full magnitude of last year, and what this could possibly mean for the future.

Musically and Snowily -

Cory Pesaturo

North Cumberland, Rhode Island

May 2006

Cory Pesaturo's 2005 Atlantic Hurricane Season Records List

=====

There Are Even MORE Records Than This But To Find The Old Records Can Sometimes Be Impossible, Due To The Lack Of Technology In Previous Seasons

=====

General Records

- Most Named Storms in a Season (**28**) (Old Record was **21** in 1933)
- Most Hurricanes in a Season (**15**) (Old Record was **12** in 1969)
- Highest Accumulated Cyclone Energy (**248**) (Old Record was **243** in 1950)
- Most Retired Names in a Season (**5** – **Hurricane Dennis, Hurricane Katrina, Hurricane Rita, Hurricane Stan and Hurricane Wilma**) (Old Record was **4** in 1955, 1995, and 2004)
- **3** out of the **Top 6** Most Intense Storms are from the 2005 Season (*mb* – millibars)
(**1st Wilma (882 mb), 4th Rita (895 mb), 6th Katrina (902 mb)**)
- Most NTC Units (**284**) (Old Record was **242.5** NTC units in 1950) (*NTC* - Net Tropical Cyclone)
- Most Category 5 Hurricanes in a Season (**4**- **Hurricane Emily, Hurricane Katrina, Hurricane Rita and Hurricane Wilma**) (Old Record was **2** in 1960 and 1961)
- Costliest Atlantic Hurricane Season (**Approximately \$100+ Billion Dollars**)
(Old Record was **1992** with **\$45 Billion Dollars**)
- Even with Inflation Adjusted - **This Year was 2 Times More Costly than the Previous Record of 2004 and 1992**
which Cost \$42 Billion and \$45 Billion respectively)

- Most Tropical Cyclones (*a cyclone that is classified as a Tropical Depression or greater in strength*) to Affect the United States in a Season **(9)** (Old Record was 8 in 1933)
- Most Tropical Depressions in a Season **(31)** (Old Record was most likely 1933 with approximately **23- 25**, although because of the lack of technology and information, no one can be 100% sure)
- Earliest season to meet the Criteria for an “Above- Average Season” **(September 5th)**
(The values on that date were ACE=103, with the statistics being *Tropical Cyclones* =13, *Hurricanes* =6, *Major Hurricanes* =3) (Old Record was September 14th, 1995) (*ACE – Accumulated Cyclone Energy*)
- Most Hurricanes with 150mph+ winds in a Season **(5 - Hurricane Dennis, Hurricane Emily, Hurricane Katrina, Hurricane Rita and Hurricane Wilma)** (Old Record was 2 in 1960, 1961, 1998, 1999, 2004)
- Tied with 1999 for the Most Category 4 or Category 5 Hurricanes in a Season **(5)**
- First Season to have **More than 21 Named Storms** (and use the Greek alphabet)
- Most Tropical Cyclones to have the Record of being "**The Earliest # Tropical Cyclone to Form**" **(22)**
(*Tropical Cyclones 4- 11, 13- 17, 19- 28*) (*This is explained in detail later*)
- First Time that the Atlantic Basin had more Tropical Cyclones than any other basin of the world **(28 Tropical Cyclones)** (Atlantic Basin Storms typically make up 11% of the Global total, in 2005 they made up 29%)
- Tied with 1933 and 2003 for the Only Season where a Tropical Storm formed in Each of the **-7-** Months of the Season **(June to December)** (Old Record was 2003 – April to December missing May and November / 1933 – May to November)
- First time a Tropical Storm existed in Each of the **-8-** Months of the Season **(June to November, plus December and January)**
- Most Annular Hurricanes in a Season **(3)** (Hurricanes Katrina, Rita, and Epsilon)
- Even with Inflation adjusted – 2005 was the First Season in which **5 Hurricanes Caused Over \$1 Billion Dollars** in Damage (Hurricane Dennis, Hurricane Katrina, Hurricane Rita, Hurricane Stan and Hurricane Wilma)

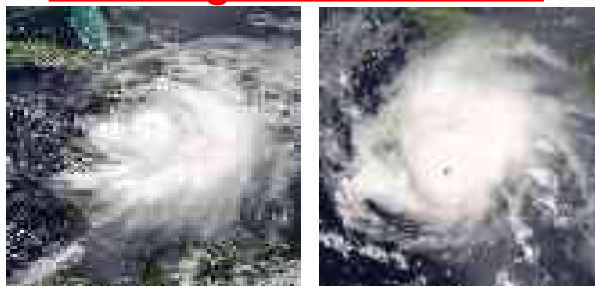
Landfall Records

Note – the difference between say a Hurricane Landfall and a Landfalling Hurricane, is one hurricane can have many “Hurricane Landfalls” but is still only One “Landfalling Hurricane” if it does landfall.

- Most Category 2+ Landfalls **(10 – Hurricane Dennis- 3, Hurricane Emily- 2, Hurricane Katrina, Hurricane Rita, Hurricane Wilma- 2 and Hurricane Beta)** (Old Record was 9 in 1886)
- Most Landfalling Major Hurricanes **(5)** (Old Record was 4 in 2004)
- Most Major Hurricane Landfalls **(11 - Hurricane Dennis- 3, Hurricane Emily- 3, Hurricane Katrina, Hurricane Rita and Hurricane Wilma- 3)** (Old Record was 7 in 2004, and 6 in 1909)
- Most Major Hurricane Landfalls on the United States **(4 - Hurricane Dennis, Hurricane Katrina, Hurricane Rita and Hurricane Wilma)** (Old Record was 3 in 1893, 1909, 1933, 1954 and 2004)
- Tied with 1999 and 2004 for the Most Landfalling Category 4 Hurricanes **(3)**
- Most Category 4 Landfalls **(6 - Hurricane Dennis- 2, Hurricane Emily- 2 (Cozumel and Yucatan Peninsula), and Hurricane Wilma- 2 (Cozumel and Yucatan Peninsula))** (Old Record was 4 in 2004)
- Tied with 1932 for the Most Landfalling Category 4 Hurricanes **(3)**
- Tied with 1951 and 1988 for the Most Category 4 Landfalls on the Yucatan Peninsula / Mexico **(2)**

- Most Landfalling Category 4 Hurricanes on the Yucatan Peninsula / Mexico **(2)**
(Old Record was 1 in 1951, 1955, 1961, 1974, 1988 and 2001)
- Tied with 1933 for the Most Hurricane Landfalls on North and Central America *(Excluding Islands)* **(11)**
- Tied with 1953 for the Most Tropical Storm Landfalls on Florida **(5)**
(Hurricane Faith struck the Faroe Islands at Category 2 Strength)
- Tied with 1966 for the Only Season with a “Pure” Tropical Cyclone to **Landfall East of the Atlantic**
(Hurricane Vince struck Spain as a Tropical Depression and Hurricane Faith struck the Faroe Islands at Category 2 Strength)
- Highest Combined Maximum Wind Speeds for All United States
Landfalling Tropical Cyclones in a Season **(865 mph)** **(Old Record was 755 mph in 1886 and 750 mph in 2004)**
- Most Tropical Cyclones at or under 950 mb to Landfall on the United States **(4)** **(Old Record was 2 set numerous times)**
- Most Tropical Cyclones at or under 940 mb to Landfall on the United States
(2 - Hurricane Katrina and Hurricane Rita) **(Old Record was 1 set numerous times)**
- Only Season where 2 Tropical Cyclones made **Landfall East of the Atlantic**
(Hurricane Vince and Tropical Storm Delta)

Pre-August Records



Hurricane Dennis and Hurricane Emily

- Hurricane Emily - Earliest Category 5 Hurricane **(July 17th)**
(Old Record was Hurricane Allen in 1980, which reached Category 5 strength on August 5th)
- Hurricane Emily – **Most / Only Category 5** Hurricane in July
- Hurricane Emily – **Most / Only Category 5** Hurricane before August
- Hurricane Dennis - Most Intense Hurricane Before August / in July **(930 mb)**
(Until Hurricane Emily) **(Old Record was Hurricane Audrey in 1957 with <946 mb)**
- Hurricane Emily - Most Intense Hurricane Before August / in July **(929 mb)**
- Hurricane Dennis – Highest Winds by a Hurricane Before August / in July **(150 mph)** **(Until Hurricane Emily)**
(Old Record was 145 mph winds by Hurricane Audrey in 1957)
- Hurricane Emily – Highest Winds by a Hurricane in Before August / in July **(160 mph)**

- Hurricane Dennis – Tied with Tropical Storm Allison (**2001**), Hurricane Agnes (**1972**), Hurricane Audrey (**1957**) and Hurricane Cesar (**1996**) for the only Tropical Cyclone to have its name retired Before August / in July
- Tied with 1916 for the Most Major Hurricanes in July (**2**)
- Tied with 1916 for the Most Major Hurricanes Before August (**2**)
- Most Category 4 Hurricanes in July (**2**) (Old Record was 1 in 1926)
- Most Category 4 Hurricanes Before August (**2**) (Old Record was 1 in 1926 and 1957)
- Most Major Hurricane Landfalls in July (**7**) (Old Record was 1 in 1926)
- Most Major Hurricane Landfalls before August (**7**) (Old Record was 1 in 1926 and 1957)
- Most Category 4 Landfalls in July (**5**) (Old Record was 1 in 1926)
- Most Category 4 Landfalls Before August (**5**) (Old Record was 1 in 1926, 1957)
- Most Hurricane Landfalls Before August / in July (**7**) (Old Record was 4 in 1886)
- Most Named Storm Days in July (**25.25**) (Old Record was 23.5 Days in 1916, then 22.5 Days in 1933)
- Most Intense Hurricane Days occurred Before August / in July (**5.75**) (Old Record was 5 in 1916)
- Costliest July ever (**approximately \$6 Billion**)
- Costliest Season Before August (**approximately \$6 Billion**) (Old Record was \$1 Billion in 1957)
- Highest ACE in July (**60.47**) (Old Record was 48.5 in 1916)
- Highest ACE Before August (**63.4**) (Old Record was 49 in 1916)

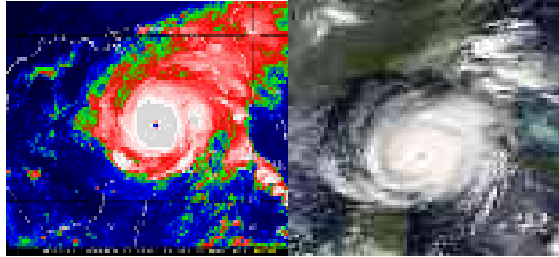
More of These in the "Additional Month Records"

Hurricane Katrina



- Most Costly Hurricane (**\$81.2 Billion**) (Old Record was Hurricane Andrew in 1992 which caused **\$44.9 Billion in 2005 dollars**) (Although if the Great Miami Hurricane of 1926 made landfall then **where it made landfall in 1928, the damage is estimated to have cost \$102 Billion dollars**)
- Widest swath of destruction at landfall - **90,000 square miles** from SE/LA to AL/FL Border, and Northward
- First time a Major United States City was rendered "**Uninhabitable**" by a Tropical System (**New Orleans**)
- Greatest Storm Surge (**28+ feet**) (Old Record was 24.6 feet by Hurricane Camille in 1969)
- **Most Destructive Flooding** in New Orleans, LA history
- Strongest Storm in the Gulf of Mexico (**902mb**) (Old Record was 905mb by Hurricane Camille in 1969, until Hurricane Katrina)

Hurricane Rita



- Largest Peacetime Evacuation in United States History for a Tropical System (**More than 3 Million People Evacuated**)
- Lowest Pressure on record for a wind speed of 115 mph (**935 mb**)
- Strongest Storm in the Gulf of Mexico (**895mb**) (Old Record was **902mb** by Hurricane Katrina weeks earlier)
- Tied with Hurricane Andrew in 1992 for the Fastest Intensification from a Tropical Storm to a Category 5 Hurricane (**36 Hours**) (Until Hurricane Wilma)

Hurricane Vince



- Farthest Northeast (*North and East*) a Hurricane has ever formed (**15.2**) (**latitude + longitude**) (Old Record was **2.9** by Hurricane Lisa in 1998)
- Farthest East a Hurricane has ever formed (**18.9*W**) (Old Record was **25.2*W** by Hurricane Jeanne in 1998)
- First “Pure” Tropical Depression (*not extra or sub-tropical*) to **Landfall in the Iberian Peninsula, Spain**
- First “Pure” Tropical Depression to **Landfall in Mainland Europe**
- Tied with Hurricane Faith which made landfall in the Faroe Islands on September 5, 1966, for the Only “Pure” Tropical Cyclone to **Landfall in land East of the Atlantic** (Hurricane Faith struck the Faroe Islands at Category 2 Strength)

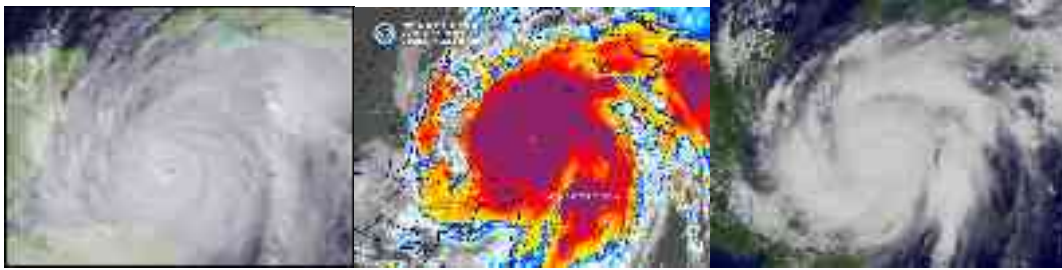
These are also a possibility

- (2nd to Epsilon - 2005) Lowest Sea Surface Temperature for a Tropical Storm to Form (23- 24°C)
- (2nd to Epsilon - 2005) Lowest Sea Surface Temperature for a Hurricane to Form (23- 24°C)
- Hurricane Vince was also **One of the Smallest Hurricanes Ever**

“Vince gets a Medal for Being “The Tropical Cyclone that baffled Meteorologists *More than Any Tropical Cyclone in Recorded History*. And if not Vince, then Wilma and Epsilon and Zeta, also of the Atlantic Hurricane Season of 2005....”

- *Anonymous*

SUPER **Hurricane Wilma**



Records in ... Could be World Record Holders, but because of the lack of information on specifically Super Typhoon Forrest, no one can be 100% sure

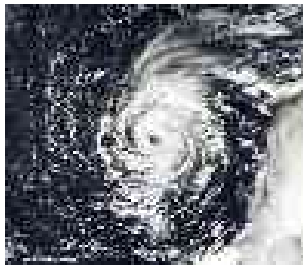
- Most Intense Storm in the Atlantic Basin (**882 mb**) (17th Worldwide)
(Old Record was 888 mb by Hurricane Gilbert in 1988) (*If Wilma had been part of the Southern Hemisphere Cyclone Season, its pressure would have been somewhere in the range of 840 mb – 850 mb, By Far surpassing Typhoon Tip’s*)
World Record of 970 mb- <http://www.ssd.noaa.gov/PS/TROP/CI-chart.html>
- Fastest Intensification from a Tropical Storm to a Category 5 Hurricane (**20 Hours**)
(Old record was 36 Hours by Hurricane Andrew in 1992 and Hurricane Rita in 2005)
- Smallest Eye Diameter for a Cat. 2 Hurricane (7- 8nm)
- Smallest Eye Diameter for a Cat. 3 Hurricane (5nm)
- Smallest Eye Diameter for a Cat. 4 Hurricane (2nm)
- Smallest Eye Diameter for a Cat. 5 Hurricane (1.5 - 2nm)
- Smallest Eye Diameter of Any Hurricane (1.5 - 2nm)
(Although Typhoon Tip’s eye was approximately this small as well)
- Most Rapid Intensification in a 24 hour period (**97 mb**)
(**979 mb to 882 mb – From 1200 UTC 18 October to 1200 UTC 19 October**) (Old World Record was 92 mb+ by Super Typhoon Forrest in 1983, though some sources say it was a 100 mb drop)
- Greatest Average Intensification Per Hour over a 24 hour period (**4 mb per hour**)
(Old Record was Hurricane Gilbert in 1988 which dropped at 3 millibars an hour for 24 hours)

- Most Rapid Intensification in an 18 hour period (**93 mb**) (975mb to 882mb)
- Greatest Average Intensification Per Hour over an 18 hour period (**5.2 mb an hour**)
(Old Record was Hurricane Gilbert in 1988 which dropped at 3.6 millibars an hour for 18 hours)
- Most Rapid Intensification in a 12 hour period (**83 mb**) (975 mb to 892 mb)
- Greatest Average Intensification Per Hour over a 12 hour period (**6.9 mb an hour**)
(Old Record was Hurricane Allen's in 1980 which dropped at 4 millibars an hour for 12 hours)
- Most Rapid Intensification in a 6 hour period (**54 mb**) (946 mb to 892 mb)
- Greatest Average Intensification Per Hour over a 6 hour period (**9mb an hour**)
(Old Record was Hurricane Beulah in 1967 which dropped at 6.3 millibars an hour for 6 hours)
- **Fastest Average Intensification Recorded** - In Less than a 5.5 hour period, Hurricane Wilma Intensified at an Average Rate of **9.9 mb an hour** (954 mb to 901 mb)
- Most Intense Category 4 storm in the Atlantic Basin (**892 mb**)
- First Category 4 storm in the Atlantic Basin to record a minimum central pressure below **900 mb**
- Most Intense Hurricane in October (**882 mb**) (Old Record was 905 mb by Hurricane Mitch in 1998)
- **Natural Gas climbed 10% in 1 Day** Because of the effects of the **Hurricane Wilma / Wilma Nor'easter Storm**
- Tied with Hurricane Hattie in 1961 and Hurricane Mitch in 1998 for the **Only Category 5 Hurricane in October**
- Greatest 24 Hour Rainfall Total in Mexico (**62.05in. Isla Mujeres**)
- Costliest Atlantic Hurricane in Mexico (**\$7.5 Billion**)
- Most Records set by an **October Hurricane (26)**
- Most Records set by **One Single Tropical Cyclone (26)**
(Hurricane Wilma was also 3rd Costliest United States Hurricane (**\$20.6 Billion**) (inflation adjusted), along with the 2nd Costliest Mexican Hurricane (inflation adjusted))

“Hurricane Wilma continues to confound forecasters, and has intensified for the 3rd time to a Category 3 Hurricane with 125 mph winds, despite wind shear levels that would normally Not Even support a Category 1 Hurricane (55Kts). In fact, Wilma is close to Category 4 status - the 5 pm Oct. 24 Hurricane Hunter flight found winds at 10,000 feet of 157 mph, which normally translates to a surface wind of 140 mph - Category 4 winds. It is Moving at 55 mph. Wilma did Extreme Damage in the Yucatan Peninsula, *Then* Hit Florida as a Major Hurricane, *Then* was the Main contributor of ‘The Superstorm of 2005’...and That’s the more non- meteorological standpoint of its astonishing story....”

- *Anonymous*

Tropical Storm Delta



- Farthest East a Tropical Storm has formed in November (**41.2*W**)
(**Old Record was 44.5*W by Tropical Storm #10 in 1954**)
- Farthest East a Tropical Storm has formed after October 31st (**41.2*W**)
(**Old Record was 44.5*W by Tropical Storm #10 in 1954**)
- Only Tropical Cyclone to **Landfall in Africa**
- Only Tropical Cyclone to **Landfall in Morocco**
- Only Tropical Cyclone to **Landfall on the Canary Islands**

Hurricane Epsilon



- Longest- Lasting "Pure" Tropical Storm in December (**9.25 Days**) (Old Record was 4.5 Days by **Hurricane #18 of 1887**) (**Hurricane Lili** which lasted 11.75 Days, spent 8 of those days being **Sub-Tropical**)
- Longest- Lasting Hurricane in December (**5 Days**)
(**Old Record was 2.75 Days by Hurricane Lili of 1984**)
- Furthest East a Hurricane ever existed in December (**34.2*W**)
(**Old Record was 41.7*W by Hurricane #18 of 1887**)
- Furthest East a Tropical Storm ever existed in December (**38.1*W**)
(**Old Record was 41.7*W by Hurricane #18 of 1887**)
- Weakest Annular Hurricane (**85mph**) (usually these types of Hurricanes are at least **Category 3 or higher**)
- Latest Annular Hurricane (**December 7th**)

These are also a possibility

- Coldest Sea Surface Temperature for a Tropical Storm to Form (**21*C**)
- Coldest Sea Surface Temperature for a Hurricane to Form (**22*C**)
(*First Tropical Cyclone to have an Official NHC Forecast continuously include Non- Formal Sentences*)
(*Actual Account in "The Story of Hurricane Epsilon"*)

"The Story Of Hurricane Epsilon" – Further Down

Tropical Storm Zeta



- Tied with Hurricane Alice of 1954- 1955 for the Only Storm to exist in January
- Farthest North a Tropical Storm has ever formed in January (**24.2*N**)
(Old Record was **22*N** by Hurricane Alice of 1954- 1955)
- Farthest North a Tropical Storm has ever existed in January (**25.7*N**)
(Old Record was **22*N** by Hurricane Alice of 1954- 1955)
- Farthest East a Tropical Storm has ever formed / existed in January (**36.1*W**)
(Old Record was **51.6*W** by Hurricane Alice of 1954- 1955)
- Farthest Northeast (*North and East*) a Tropical Storm has ever formed in January (**-11.9***) (**latitude + longitude**)
(Old Record was **-29.6*** by Hurricane Alice in 1954- 1955)
- Farthest Northeast (*North and East*) a Tropical Storm has ever existed in January (**-10.4***) (**latitude + longitude**)
(Old Record was **-29.6*** by Hurricane Alice in 1954- 1955)
- Longest Lasting Tropical Storm in January (**6.75 Days**)
(Old Record was Hurricane Alice of 1954- 1955 with 6 Days (7.25 Days Completely with Tropical Depression level))

"Like its Greek cousins Delta and Epsilon of November, Zeta formed in conditions one would not normally expect a tropical storm to form- - sea surface temperatures are only 24 C (2 1/2 degrees below the 26.5 C minimum usually needed), and under wind shear of 20- 25 knots (usually, wind shear of 15 knots or less is required.)"

- Dr. Jeff Masters

Earliest Storm Formations

- Earliest formation of a season's **4th Storm**
- Earliest formation of a season's **5th Storm**
- Earliest formation of a season's **6th Storm**
- Earliest formation of a season's **7th Storm**
- Earliest formation of a season's **8th Storm**
- Earliest formation of a season's **9th Storm**
- Earliest formation of a season's **10th Storm**
- Earliest formation of a season's **11th Storm**
- (Earliest formation of a season's 12th storm was August 29th, 1995 by Hurricane Luis)
- Earliest formation of a season's **13th Storm**
- Earliest formation of a season's **14th Storm**
- Earliest formation of a season's **15th Storm**

- Earliest formation of a season's **16th Storm**
- Earliest formation of a season's **17th Storm**
- (Earliest formation of a season's 18th storm was October 1st, 1933 by Hurricane #18)
- Earliest formation of a season's **19th Storm**
- Earliest formation of a season's **20th Storm**
- Earliest formation of a season's **21st Storm**
- (Only) Earliest formation of a season's **22nd Storm**
- (Only) Earliest formation of a season's **23rd Storm**
- (Only) Earliest formation of a season's **24th Storm**
- (Only) Earliest formation of a season's **25th Storm**
- (Only) Earliest formation of a season's **26th Storm**
- (Only) Earliest formation of a season's **27th Storm**
- (Only) Earliest formation of a season's **28th Storm**

Additional Month Records

- First Season with 3 Months being "*The Costliest Month* "
(**July, September, October**)
- First Season with 4 Months having "*The Most Hurricanes Days in that particular Month* "
(**July, September, October, December**)
- First Season with 3 (2 records + 2 ties) Months having "*The Most Tropical Cyclones to form in that particular Month* "
(**July, October, November (Tied with 2001) and January (Tied with Hurricane Alice of 1954- 1955)**)
- Most Tropical Cyclones to form in July (**5**) (**Old Record was 4 in 1966 and 1995**)
- Tied with 1966 for the Most Hurricanes to form in July (**3**)
- Tied with 1955 and 2000 for the Most Hurricanes to form in September (**5**)
- Most Tropical Cyclones to form in October (**7**) (**Old Record was 6 in 1887 and 1950**)
- Tied with 1950 for the Most Hurricanes to form in October (**4**)
- Tied with 1950, 1961, 1964 and 1995 for the Most Major Hurricanes to form in October (**2**)
- Tied with 2001 for the Most Tropical Cyclones to form in November (**3**)
- Tied with 1887 and 2003 for the Most Tropical Cyclones to exist in December (**2**)
- Tied with 1954- 1955 for the Most Tropical Cyclones to exist in January (**1**)
- Most Tropical Cyclones to form before August (**7**)
(**Old Record was 5 in 1887, 1933, 1936, 1959, 1966 and 1995**)
- Tied with 1933 and 1995 for the Most Tropical Cyclones to form before September (**12**)
- Tied with 1933 for the Most Tropical Cyclones to form before October (**17**)
- Tied with 1995 for the Most Hurricanes before October (**9**)
- Most Tropical Cyclones to form before November (**24**) (**Old Record was 20 in 1933**)
- Most Hurricanes to form before November (**14**) (**Old Record was 11 in 1995**)
- Most Tropical Cyclones to form before December (**27**) (**Old Record was 21 in 1933**)
- Most Hurricanes to form before December (**14**) (**Old Record was 12 in 1969**)
- Tied with 1954- 1955 for the Most Tropical Cyclones existing after December 31st (**1**)

- Tied with 1887 and 2003 for Most Tropical Cyclones existing after November 30th **(2)**
- Tied with 1887, 1954, 1984, 1998 and 2001 for the Most Hurricanes existing after November 30th **(1)**
- Most Tropical Cyclones to form after October 31st **(4)** (Old Record was 3 in 1887 and 2001)
- Most Tropical Cyclones to form after September 30th **(11)** (Old Record was 7 in 2001)
- Tied with 2001 for the Most Hurricanes to form after September 30th **(5)**
- Most Tropical Cyclones to form after August 31st **(16)** (Old Record was 11 in 2001)
- Most Hurricanes to form after August 31st **(10)** (Old Record was 9 in 2001)
- Most Tropical Cyclones to form after July 31st **(21)** (Old Record was 17 in 1969)
- Tied with 1969 for the Most Hurricanes to form after July 31st **(12)**
- Most Tropical Cyclones to form after June 30th **(26)** (Old Record was 19 in 1933)
- Most Hurricanes to form after June 30th **(15)** (Old Record was 12 in 1969)
- Most Tropical Cyclones to form after May 31th **(28)** (Old Record was 21 in 1933)
- Most Hurricanes to form after May 31th **(15)** (Old Record was 12 in 1969)
- Most Hurricane Days in December **(5)** (Old Record was 2.75 in 1984 and 2001)
- Most Hurricane Days After November 30th **(5)** (Old Record was 4 by Hurricane Alice in 1954- 1955)
- Most Named Storm Days after November 30th **(15.75)** (Old Record was 7 in 2003)
- Most Named Storm Days after October 31st **(22.75)** (Old Record was 20 in 1932)
- Highest ACE index in December **(19)** (Old Record was 5+ in 1887)
- Highest ACE index after November 30th **(19.5)** (Old Record was 5+ in 1887)
- **Costliest Month of August** in the United States **(\$80+ Billion)**
(Old Record was \$44.9 Billion in 1992)
- **Costliest Month of October** in the United States **(\$18- 20 Billion)**
(Old Record was \$4 Billion in 1985)

More General Records

- Most Tropical Cyclones in a Season to Drop Below 1000 mb **(22)** (Old Record was 16 in 1886, 1969 and 1995)
- Most Tropical Cyclones in a Season to Drop Below 980 mb **(11)** (Old Record was 10 in 1950)
- Most Tropical Cyclones in a Season to Drop Below 950 mb **(7)** (Old Record was 5 in 1999, and 1961 although 1950 might have had more but because of the lack of technology, no one can be 100% sure)
- Most Tropical Cyclones in a Season to Drop Below 930 mb **(5)** (Old Record was 2 in 1961, although 1950 might have had more but because of the lack of technology, no one can be 100% sure)
- Most Tropical Cyclones in a Season to Drop Below 900 mb **(2 – Hurricane Rita and Hurricane Wilma)** (Old Record was 1 in 1935, 1980, 1988)
- Highest Combined Maximum Wind Speeds for All Tropical Cyclones in a Season **(2470 mph)**
(Old Record was 1675 mph in 1995, 1670 mph in 1933 and 1660 mph in 1969)
- Most Major Hurricanes in the Caribbean Sea **(4 – Hurricane Dennis Category 4, Hurricane Emily Category 5, Hurricane Wilma Category 5, Hurricane Beta Category 3)** (Old Record was 3 in 1955 (and possibly 1961))

- Most Major Hurricanes in the Gulf of Mexico (**5 – Hurricane Dennis Category 4, Hurricane Emily Category 3, Hurricane Katrina Category 5, Hurricane Rita Category 5, Hurricane Wilma Category 5**) (Old Record was **4 in 1909**)
- Most Major Hurricanes in the Gulf of Mexico + the Caribbean Sea (**6 - Hurricane Dennis Category 4, Hurricane Emily Category 5, Hurricane Katrina Category 5, Hurricane Rita Category 5, Hurricane Wilma Category 5, Hurricane Beta Category 3**) (Old Record was **4 in 1909**)
- Most Category 4+ Hurricanes in the Caribbean Sea (**3 – Hurricane Dennis Category 4, Hurricane Emily Category 5, Hurricane Wilma Category 5**) (Old Record was **2 in 1988 and 2001**)
- Tied with 1915, 1960 and 2004 for Most Category 4+ Hurricanes in the Gulf of Mexico (**3 – Hurricane Dennis Category 4, Hurricane Katrina Category 5, Hurricane Rita Category 5**)
- Most Category 4+ Hurricanes in the Caribbean Sea + the Gulf of Mexico (**5 – Hurricane Dennis Category 4, Hurricane Emily Category 5, Hurricane Katrina Category 5, Hurricane Rita Category 5, Hurricane Wilma Category 5**) (Old Record was **2 in 1932, 1960, 1964, 1979, 1988, 1999, 2001 and 2004**)
- Most Category 5 Hurricanes in the Gulf of Mexico (**2 – Hurricane Katrina and Hurricane Rita**)
- Most Category 5 Hurricanes in the Caribbean Sea (**2 – Hurricane Emily and Hurricane Wilma**)
- Most Category 5 Hurricanes in the Gulf of Mexico + the Caribbean Sea (**4 - Hurricane Emily, Hurricane Katrina, Hurricane Rita and Hurricane Wilma**) (Old Record was **2 in 1961**)
- Most Hurricanes that had maximum winds of 175 mph+ (**3 – Hurricane Katrina, Hurricane Rita and Hurricane Wilma**) (Old Record was **1 set numerous times**)
- Most Hurricanes in the Gulf of Mexico + the Caribbean Sea that had maximum winds of 175 mph+ (**3 – Hurricane Katrina, Hurricane Rita, Hurricane Wilma**) (Old Record was **1 in 1955, 1961, 1969, 1977, 1980, 1988, 1998 and 2004**)
- Latest End to an Atlantic Hurricane Season (**0000 UTC 6 January 2006**) (Old Record was **600 UTC 5 January by Hurricane Alice in 1954- 1955**) (*UTC - Universal Coordinated Time*)
- The Record for **"The Most Records Tied or Beaten in one Season"**

(For these Consecutive Year Records, There are appoximently Triple this amount If Necessary. Here are just the Main Records)

2 Year Consecutive Records (2004- 2005)

- 2 Year Consecutive Total of ACE (**473**) (Old Record was **394 in 1995- 1996**)
- 2 Year Consecutive Total of NTC (**488**) (Old Record was **408.5 in 1995- 1996**)
- 2 Year Consecutive Total of Category 5 Hurricanes (**5**) (Old Record was **4 in 1960- 1961**)
- Tied with 1950- 1951 for the 2 Year Consecutive Total of Major Hurricanes (**13**)
- 2 Year Consecutive Total of Hurricanes (**24**) (Old Record was **21 in 1886- 1887**)
- 2 Year Consecutive Total of Tropical Cyclones (**43**) (Old Record was **32 in 1932- 1933 or 1933- 1934 and 1995- 1996**)

- 2 Year Consecutive Total of Tropical Cyclones including Depressions **(47)** (Old Record was probably **1932- 1933 or 1933- 1934 with approximately 34- 36**, although because of the lack of technology, no one can be 100% sure)
- 2 Year Consecutive Total of Category 2+ Landfalls **(20)** (Old Record was 16 in 1886- 1887)
- 2 Year Consecutive Total of Landfalling Major Hurricanes **(9)** (Old Record was 5 in 2003- 2004)
- 2 Year Consecutive Total of Major Hurricane Landfalls **(18)** (Old Record was 10 in 1909- 1910)
- 2 Year Consecutive Total of Landfalling Category 4 Hurricanes **(5)** (Old Record was 4 in 1932- 1933 and 1988- 1989)
- 2 Year Consecutive Total of Category 4 Landfalls **(10)** (Old Record was 5 in 1988- 1989)
- 2 Year Consecutive Total of Named Storm Days **(217.25)** (Old Record was 190.5 in 1995- 1996 and 185.75 in 1886- 1887)
- 2 Year Consecutive Total of Intense Hurricane Days **(38.75)** (Old Record was 26.5 in 1950- 1951 and 24.25 in 1995- 1996)
- 2 Year Consecutive Total of Florida Tropical Storm Landfalls **(9)** (Old Record was 7 in 1888- 1889 and 1947- 1948 and 1994- 1995)
- 2 Year Consecutive Total of Florida Hurricane Landfalls **(6)** (Old Record was 4 in 1886- 1887, 1947- 1948 and 1964- 1965)
- 2 Year Consecutive Total of Florida Major Hurricane Landfalls **(4)** (Old Record was 3 in 1947- 1948 and 1949- 1950)
- 2 Year Consecutive Total of Most Retired Names **(9)** (Old Record was 7 in 1995- 1996 and 2003- 2004)

3 Year Consecutive Records (2003- 2005)

- 3 Year Consecutive Total of ACE **(648)** (Old Record was 475+ in 1949- 1951)
- 3 Year Consecutive Total of NTC **(676)** (Old Record was 505.6 in 1949- 1951)
- 3 Year Consecutive Total of Category 5 Hurricanes **(6)** (Old Record was 4 in 1959- 1961 or 1960- 1962)
- Tied with 1949- 1951 and 1950- 1952 for the 3 Year Consecutive Total of Major Hurricanes **(16)**
- 3 Year Consecutive Total of Hurricanes **(31)** (Old Record was 27 in 1886- 1888)
- 3 Year Consecutive Total of Tropical Cyclones **(59)** (Old Record was 43 in 1932- 1934 and 2002- 2004)
- 3 Year Consecutive Total of Tropical Cyclones including Tropical Depressions **(63)** (Old Record was probably **1931- 1933 with approximately 44- 46**, although because of the lack of technology, no one can be 100% sure. **2002- 2004 had 43**)
- 3 Year Consecutive Total of Landfalling Major Hurricanes **(10)** (Old Record was 6 in 1948- 1950, 2002- 2004)
- 3 Year Consecutive Major Hurricane Landfalls **(18)** (Old Record was 10 in 1908- 1910)
- 3 Year Consecutive Total of Named Storm Days **(289.75)** (Old Record was 236.5 in 1886- 1887)
- 3 Year Consecutive Total of Hurricane Days **(129)** (Old Record was 123.25 in 1893- 1895, 118 in 1950- 1952, 115.5 in 1949- 1951 and 114.75 in 1995- 1997)
- 3 Year Consecutive Total of Intense Hurricane Days **(55.75)** (Old Record was 33.25 in 1950- 1952)
- 3 Year Consecutive Total of Florida Hurricane Landfalls **(6)** (Old Record was 5 in 1947- 1949)
- 3 Year Consecutive Total of Most Retired Names **(11)** (Old Record was 9 in and 2002- 2004)
- First Time that 3 Seasons in a row had a Tropical System that existed after November 30th
- First Time that 3 Seasons in a row were all **Hyperactive Seasons**

Nearly Records

General Records

- Highest Winds Recorded by a Hurricane
 1. Hurricane Camille in 1969 and Hurricane Allen in 1980 (190 mph)
 2. Hurricane Wilma in 2005 and Hurricane Gilbert in 1988 (185 mph)

- Strongest Hurricane in December / after November 30th
 1. Unnamed Storm in 1925 (100 mph)
 2. Hurricane Epsilon in 2005 and Hurricane Nichole in 1998 (85 mph)

- Longest Lasting Storm in December and after November 31st
 1. Hurricane Lili in 1984 (12 Days)
 2. Hurricane Epsilon in 2005 (9 Days)

“Storm Day” Records

- Most Named Storm Days
 1. 1933 (136)
 2. 2005 (127.25)
 3. 1995 (121.5)

- Earliest point in the season to meet all the Criteria for a Hyperactive Season
 1. September 8th, 1950
 2. September 11th, 2005

- 2 Year Consecutive Total of Hurricane Days
 1. 1995- 1996 (105.25)
 2. 2004- 2005 (97)
 3. 1950- 1951 (95.25)
 4. 1886- 1887 (94)

- Most Hurricane Days in July
 1. 1916 (12.5)
 2. 2005 (11.25)

- Most Hurricane Days Before August
 1. 1916 (12.5)

2. 1886 (11.75)
3. 1933 (11.5)
4. **2005** (11.25)

- Most Intense Hurricanes Days in October

1. 1954 (6)
2. 1961 (5.75)
3. 1894, 1963, **2005** (5.25)

Landfalling Records

- Most Intense Hurricane to make Landfall on the United States

1. The "Labor Day Hurricane" in 1935 (892 mb)
2. Hurricane Camille in 1969 (909 mb)
3. Hurricane Katrina in **2005** (920 mb)

- Costliest Hurricane adjusted by 2005 inflation

1. Hurricane Katrina in **2005** (\$81.2 Billion)_
2. Hurricane Andrew in 1992 (\$44.9 Billion)
3. Hurricane Wilma in **2005** (\$20.6 Billion)

- Costliest Natural Disaster in Mexican History

1. Hurricane Pauline of the 1994 Pacific Hurricane Season (\$8.84 Billion)
2. Hurricane Wilma in **2005** (\$7.5 Billion)

- Most Hurricane Landfalls on the United States

1. 1886, 1985 (7)
2. 1916, 1933, **2005** (6)

- Most Landfalling Hurricanes

1. 1933 (10)
2. **2005** (8)

- Most Hurricane Landfalls

1. 1933 (17)
2. **2005** (15)

- Most Landfalling Tropical Storms

1. 1933 (18)
2. **2005** (14)

- Most Tropical Storm Landfalls

1. 1933 (29)
2. **2005** (24)

- Most Tropical Storm Landfalls on North and Central America (*Excluding Islands*)
 1. 1933 (20)
 2. 2005 (17)
- Most Tropical Cyclones to Landfall in Mexico from the Atlantic Basin
 1. 1933 (7)
 2. 2005 (6)
- Strongest Tropical Cyclone to make Landfall in the United States Before August / in July
 1. Hurricane Audrey in 1957 (<946 mb)
 2. Hurricane Dennis in 2005 (946 mb)
- Most Hurricanes Before August
 1. 1886 (4) (3 in June)
 2. 2005 (3)

Formations

- Most Major Hurricanes
 1. 1950 (8)
 2. 1961, 2005 (7)
- Latest Category 5 Hurricane
 1. Hurricane Hattie (October 30th- 31st, 1961)
 2. Hurricane Wilma (October 19th, 2005)
- Farthest East a Tropical Storm has existed
 1. Hurricane Chloe in 1967 - 5.1*W
 2. Hurricane Faith in 1966 - 6.0*W
 3. Hurricane Vince in 2005 - 12.8*W
 4. Hurricane Ivan in 1998 - 15.5*W
- Farthest East a Hurricane has ever existed
 1. Hurricane Faith in 1966 - 6.0*W
 2. Hurricane Fran in 1973 - 12.0*W
 3. Hurricane Chloe in 1967 - 18.1*W
 4. Hurricane Vince in 2005 - 18.9*W
 5. Hurricane Carol in 1965 - 19.7*W
- Farthest East a Tropical Form has ever formed
 1. Tropical Storm Ginger in 1967 - 18.1*W
 2. Tropical Storm #6 in 1988 - 18.5*W
 3. Hurricane #3 in 1900 - 18.5*W
 4. Hurricane Vince in 2005 - 18.9*W

5. Hurricane Jeanne in 1998 - 19.4*W

- Farthest Northeast (*North and East*) a Tropical Storm has ever existed (latitude + longitude)

1. Hurricane Faith in 1966 (55.1)
2. Hurricane Vince in 2005 (14.5)
3. Hurricane Ivan in 1980 (11)

- Farthest East a Tropical Storm has existed in November / after October 31st

1. Hurricane Lois in 1966 - 22.9*W
2. Tropical Storm Delta in 2005 - 24.8*W
3. Unnamed Hurricane in 1969 - 25*W

- Most Tropical Cyclones to exist in December

1. 1887 (3)
2. 2003, 2005 (2)

- Epsilon - Only the 10th Hurricane to exist in December

- Epsilon - Only the 9th Hurricane to form in December

- Latest Tropical Storm to Form

1. Hurricane Alice – 1200 UTC 30 December 1954
2. Tropical Storm Zeta – 600 UTC 30 December 2005

- Farthest East a Storm has formed in December

1. Hurricane Nichole in 1998 (29.1*W)
2. Tropical Storm Zeta in 2005 (36.1*W)
3. Tropical Storm Peter in 2003 (37.4*W)

=====

The Story Of Hurricane Epsilon

Although this happens often, here is a prime example of how we as insignificant human beings, have still no idea of how these amazing systems work, and how nature continues to fool us everyday, even in this “age of technology”...

“Epsilon refuses to obey the rules. Not only has Epsilon refused to die as expected- - it has strengthened in the past day to near Category 2 strength. Epsilon is traversing 22- 23C waters, which are a full four degrees C (7 F) below what is normally thought of as the minimum needed to allow a hurricane to strengthen. The upper level winds are unfavorable- - Epsilon was been under 20 knots of shear the past two days. It is unusual to see a hurricane intensify in the face of 20 knots of shear (although Wilma also managed to do so). It is unheard of for a hurricane to intensify in the face of 20 knots of shear, and with 22C water temperatures under it. Like I've been saying about this entire Hurricane Season of 2005, the

normal rules do not apply. Epsilon is another storm that we, common people and professional meteorologists, do not understand.”

- Dr. Jeff Masters

“You Must look at How long the National Hurricane Center thought there would be an Imminent Demise of Epsilon since it First became a Tropical Storm, And also see how the NHC Completely cannot understand Epsilon Day after Day after Day.”

- Anonymous

Epsilon is Born on November 29

10 pm EST Thursday Dec. 1st, Epsilon had winds of 65 mph and a pressure of 992 mb:

EPSILON WILL BE OVER 22C- 23C SEA SURFACE TEMPERATURES FOR THE NEXT 12- 24 HR. AFTER THAT...THE SSTs SHOULD GRADUALLY COOL ALONG THE FORECAST TRACK. **THIS COMBINED WITH CONTINUED VERTICAL SHEAR SHOULD PRODUCE A SLOW WEAKENING TREND.**

Epsilon Becomes a Hurricane Friday Morning

10 pm EST Friday Dec. 2nd, Epsilon had winds of 75 mph and a pressure of 987 mb:

WATER TEMPERATURES DECREASE ALONG THE FORECAST TRACK...AND SO A SLOW SPIN DOWN OF THE VORTEX IS ANTICIPATED...**WITH A GRADUAL LOSS OF CONVECTION AND TROPICAL CHARACTERISTICS.**

10 pm EST Saturday Dec. 3rd, Epsilon had winds of 75 mph and a pressure of 987 mb:

EPSILON MIGHT OR MIGHT NOT STILL BE A HURRICANE... BUT IN ANY CASE IT LIKELY WILL NOT BE ONE ON SUNDAY... SINCE IT IS HEADED FOR EVEN COOLER WATERS WHILE DRIER AIR AND SLIGHTLY STRONGER WESTERLIES ARE NOT FAR BEHIND. (4pm advisory - ...**EPSILON STRENGTHENS AGAINST ALL ODDS...**)

10 am EST Sunday Dec. 4th Epsilon had winds of 85 mph and a pressure of 982 mb:

AFTER A SLIGHT WEAKENING OVERNIGHT...MORNING SATELLITE IMAGES INDICATE THAT EPSILON HAS RESTRENGTHENED. THE EYE HAS BECOME MORE SYMMETRIC AND THE RING OF CONVECTION IS STRONGER THAN YESTERDAY. T- NUMBERS FROM TAFB AND SAB ARE 4.5 ON THE DVORAK SCALE AND ON THIS BASIS...THE INITIAL INTENSITY IS INCREASED TO 75 KNOTS. **THERE ARE NO CLEAR REASONS...AND I AM NOT GOING TO MAKE ONE UP...TO EXPLAIN THE RECENT STRENGTHENING OF EPSILON AND I AM JUST DESCRIBING THE FACTS. HOWEVER...I STILL HAVE TO MAKE AN INTENSITY FORECAST....**

THE UPPER LEVEL WINDS ARE EXPECTED TO BE HIGHLY UNFAVORABLE AND EPSILON WILL LIKELY BECOME A REMNANT LOW. **I HEARD THAT BEFORE ABOUT EPSILON...HAVEN'T YOU?**

10 am EST Monday Dec. 5th Epsilon had winds of 80 mph and a pressure of 982 mb:

...HURRICANE EPSILON REFUSES TO WEAKEN...FUTURE INTENSITY UNCERTAIN... EPSILON HAS IGNORED THE COLD SSTs AS WELL AS THE STRONG UPPER- LEVEL WESTERLIES AND HAS MAINTAINED HURRICANE STRENGTH. I AM NOT GOING TO SPECULATE ANY MORE ON THE FUTURE INTENSITY OF EPSILON AND WILL JUST FOLLOW SHIPS AND GFDL WHICH ARE THE BEST GUIDANCE AVAILABLE.

10 pm EST Monday Dec. 5th Epsilon had winds of 75 mph and a pressure of 986 mb:

WE HAVE SAID THIS BEFORE AT TIMES DURING THE PAST SEVERAL NIGHTS... ONLY TO HAVE EPSILON MAKE A COMEBACK THE FOLLOWING MORNING...

10 pm EST Tuesday Dec. 6th Epsilon had winds of 75 mph and a pressure of 987 mb:

THE END IS IN SIGHT. IT REALY REALY IS. BUT IN THE MEANTIME...

EPSILON CONTINUES TO MAINTAIN HURRICANE STATUS. HI-RES DATA FROM THE 2037Z QUIKSCAT PASS SHOWED SOME VERY REASONABLE-LOOKING 60 KT VECTORS IN MUCH OF THE EYEWALL...AND ALLOWING FOR THE HORIZONTAL RESOLUTION OF THE INSTRUMENT...IT IS LIKELY THAT THERE ARE STILL SOME 65 KT WINDS PRESENT IN THE CIRCULATION. DVORAK INTENSITY ESTIMATES FROM TAFB AND SAB ARE ALSO STILL 65 KT.

4am EST Wednesday Dec. 7th Epsilon had winds of 75 mph and a pressure of 987 mb:

THE END IS IN SIGHT...YES...BUT NOT QUITE YET. I THOUGHT I WAS GOING TO FIND A WEAKENING SYSTEM AND INSTEAD I FOUND THAT EPSILON IS STILL A HURRICANE. AS IT HAS DONE EVERY MORNING...THE CONVECTION HAS REDEVELOPED AROUND THE LARGE AND DISTINCT EYE...KICKING THE DVORAK T-NUMBERS BACK UP AGAIN. ALL AGENCIES SUPPORT HURRICANE INTENSITY. THE HURRICANE IS CURRENTLY LOCATED WITHIN THE REGION OF LIGHT WINDS ASSOCIATED WITH THE AXIS OF AN UPPER TROUGH. HOWEVER... THE WEAKENING PROCESS HAS TO BEGIN VERY SOON SINCE STRONG HIGH-LEVEL WINDS FROM THE SAME TROUGH ARE ALREADY HEADING TOWARD THE CORE OF THE HURRICANE. WITH THIS UPPER-LEVEL WIND PATTERN...**I HAVE NO OPTION BUT TO FORECAST WEAKENING AT A FAST PACE. NEVERTHELESS...THERE IS VERY LITTLE CONFIDENCE IN THE INTENSITY FORECAST.**

Epsilon Lost it's Hurricane Status at the 10pm EST Wednesday, December 7th Advisory

Epsilon Had it's Last Advisory at 10am EST Thursday, December 8th

...EPSILON WEAKENING RAPIDLY...THIS IS THE LAST ADVISORY...

...IT IS ABOUT TIME... I HOPE THIS IS THE END OF THE LONG LASTING 2005 HURRICANE SEASON.

=====
**For a Detailed Look at Winter Weather in
Southern New England and the Changes Occuring, View My Report –
“Southern New England Snowfall:
Is Something Happening To The Winters?”**

=====
Comments

"I credit Dr. Bill Gray's Hurricane Season of Verification posted on his web site for compiling many of these records, along with Cory Pesaturo, who has an excellent list of records that he has been diligently compiling all season."

- Dr. Jeff Masters, Doctor of Meteorology

"The 3 Best Places to Go for This Hurricane Season's Records -

- Dr. Grays Research team at Colorado State University (2005 Post Season Verification)
- Wikipedia's 2005 Hurricane Season Summary (*Which the Records List is being Revised by Cory*)
- Cory Pesaturo's Records List on Wunderground.com
- Dr. Bob King, Doctor of Meteorology

"I respect your knowledge and ability very much and I must say that your List certainly exceeds any other Record List that I have seen."

- Dave Miller, NOAA / NWS

"I've Seen the NOAA/National Hurricane Center list, and other blogs on Wunderground.com, along with the CNN List...and I can't find Any like yours...Yours blew theirs away!"

- Dr. Tony Hawkins, Doctor of Meteorology

"Your compilation is the best I have ever seen. Congratulations!!"

- Dr. John Alberg, Doctor of Meteorology

Mini Biography

I am a 19 year old student at the New England Conservatory of Music in Boston, MA. To this point, most of all my accomplishments have come from my career in music. My main focus is the accordion, although I play 4 other instruments along with arranging and composing. I have played for President Clinton on 9 different occurrences, 4 of which were at the White House. *Record* wise, I am the youngest person to ever perform at a State Dinner at the White House, 12 years old, win the National Accordion Championship, 15, and be featured as an accordionist with a symphony orchestra at 16. I have many hobbies as well, I am a freesledder, a rather new sport, and have my own self made sledding trails at my house, numbering over 100. Furthermore, I am a motor sports analyst and historian, and a professional "virtual racer", if you will. My weather knowledge is self-learned, and I will continue working in the weather field to further my knowledge concerning the amazing mechanics of our world.

References

- The National Hurricane Center, <http://www.nhc.noaa.gov/>
- www.wunderground.com
- www.wikipedia.com
- <http://www.ssd.noaa.gov/PS/TROP/CI-chart.html>
- The people at www.easternuswx.com/bb/ and www.wunderground.com